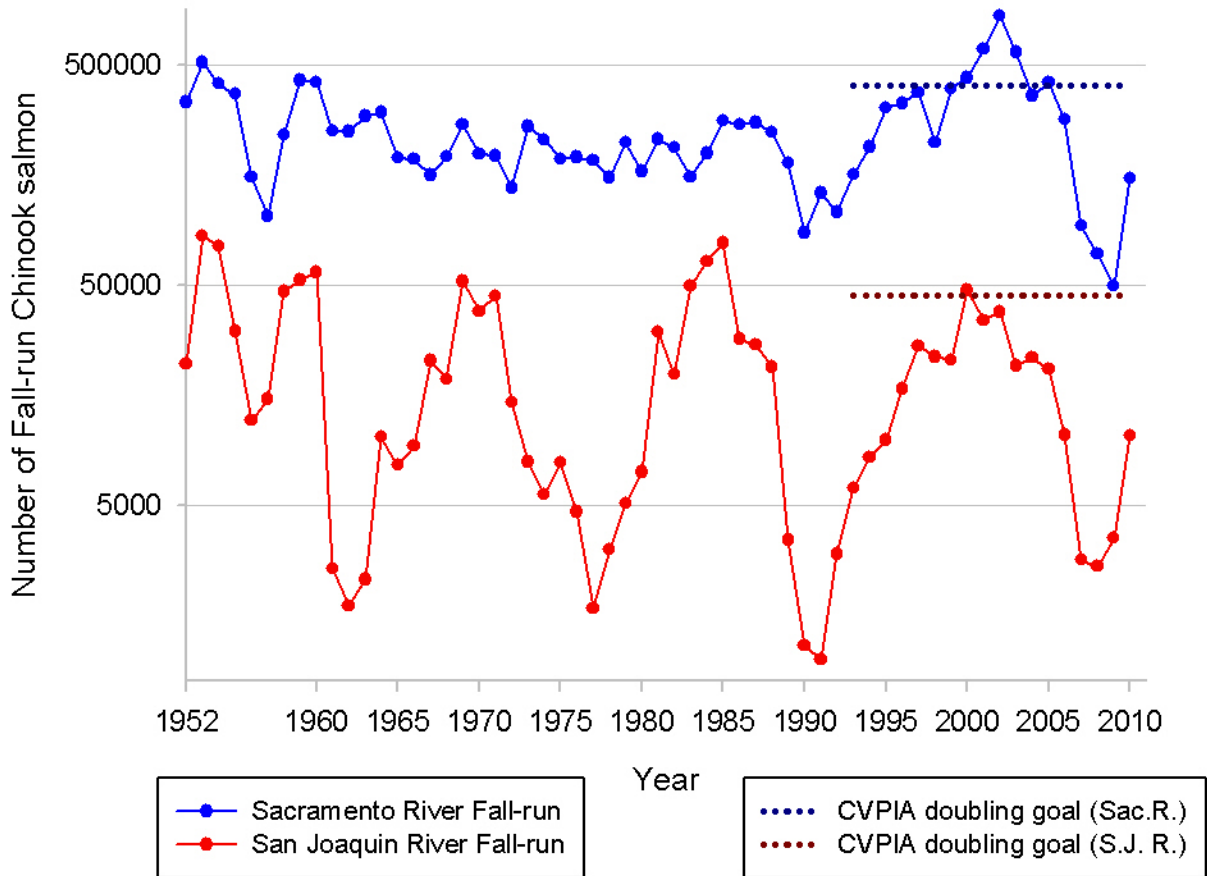


Fall-run Chinook salmon population, 1952-2010



Central Valley Fall-run Chinook salmon, *Oncorhynchus tshawytscha*, support the well-regulated commercial salmon fishery in California and Oregon. Precipitous declines due to destruction of their fresh water ecosystems and poor ocean conditions led to an unprecedented closure of the commercial fishery from 2008 through 2010. Federal mandates to double natural populations of salmon and steelhead over 1967-1991 levels have mostly not been complied with or achieved since Congress approved Central Valley Project reforms in 1992.

Note that the vertical axis (abundance) is shown on the logarithmic scale (the difference between Sacramento and San Joaquin River salmon populations is between 10x and 100x).

